

6

5

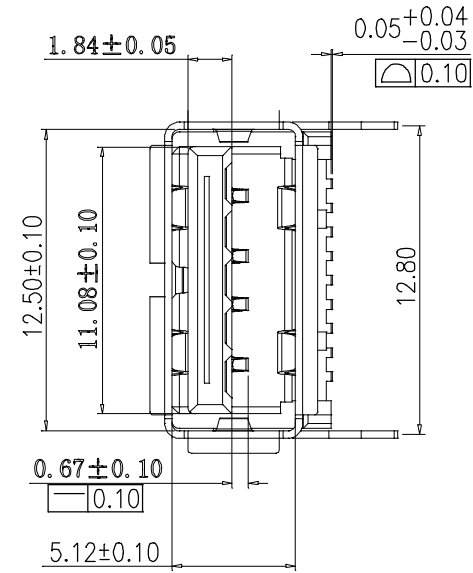
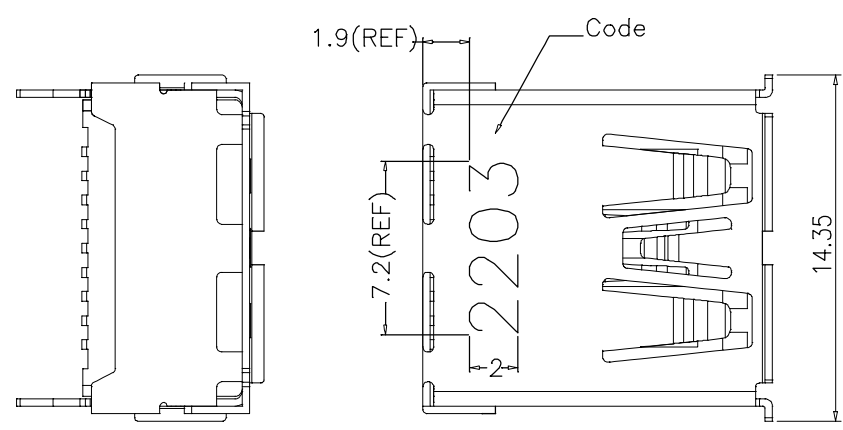
4

3

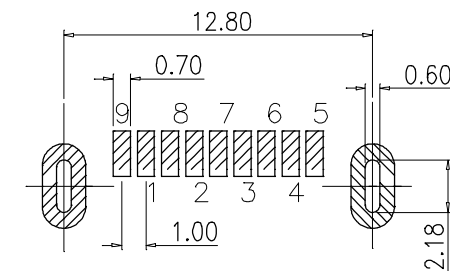
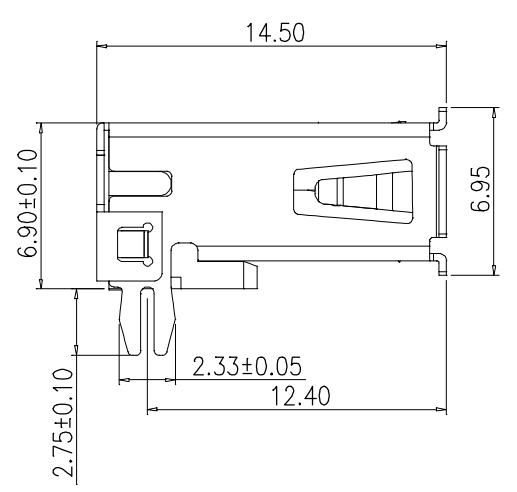
2

1

REV.	DESCRIPTION	DATE	DWG.	CHKD.
0	PROPOSED	14.06.10	B.K	T.H



NOTES:
 1.MECHANICAL:
 MATING: 35N MAX.
 WITHDRAWAL:10N MIN
 DURABILITY:5000 CYCLES .
 2.ELECTRICAL:
 CONTACT CURRENT RATING:1.5 A for
 PIN1&PIN4 0.25 A OTHER CONTACTS.
 WITHSTANDING VOLTAGE:100VAC(RMS)
 CONTACT RESISTANCE: 30mΩ MAX(Initial) FOR PIN1&PIN4
 50mΩ MAX(Initial) FOR OTHER CONTACTS
 10mΩ MAX CHANGE FOR POST TEST LLCR
 INSULATION RESISTANCE:1000MΩ MIN
 3.ENVIRONMENTAL
 TEMPERATURE RANGE -40°C ~ +85°C
 4.MATERIAL:
 HOUSING: LCP, COLOR: BLUE.
 USB2.0 CONTACT: COPPER ALLOY.
 USB3.0 CONTACT: COPPER ALLOY.
 SHELL: BRASS
 5.FINISH:
 CONTACT:
 SELECTIVE GOLD(Au) IN CONTACT AREA(SEE TABLE)
 SELECTIVE MATTE TIN(Sn) ALLOY IN SOLDER TAIL AREA
 THICKNESS=120 MICROINCH MINIMUM.
 NICKEL(Ni) OVERALL THICKNESS=80 MICROINCH MINIMUM.
 SHELL:
 NICKEL(Ni) OVERALL THICKNESS=30 MICROINCH MINIMUM.



P.C.B LAYOUT

NOTE	FINISH	PART NO.	N A M E	NO.
MATERIAL: *****	NET WEIGHT: *****	COLOR: *****	GENERAL TOLERANCE: ±0.2 ±3°	UNIT: mm
FIN. & TREAT: *****	GROSS WEIGHT: *****	SCALE: 1:1	SIZE: A4	
CUSTOMER: *****	CUSTOMER PART NO.: *****	PART NO.: MU4-311-9132-D120	PROPOSAL NO.: *****-****-**-**	REV: 0
MSH TECHNOLOGY APP: '14.06.10 CHKD: '14.06.10 DWG: '14.06.10 T.HASHIMOTO T.HASHIMOTO B.KA			(SHEET 1 OF 5) USB 3.0 A FEMALE SMT TYPE	
			(CUSTOMER DRAWING)	
