

6

5

4

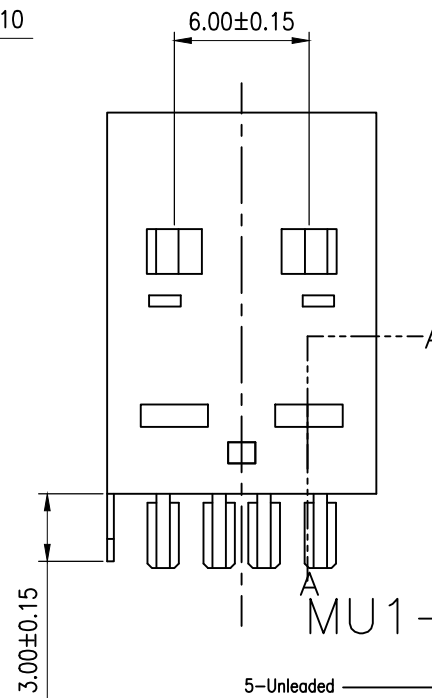
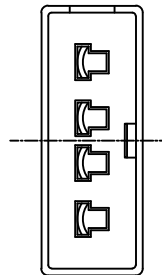
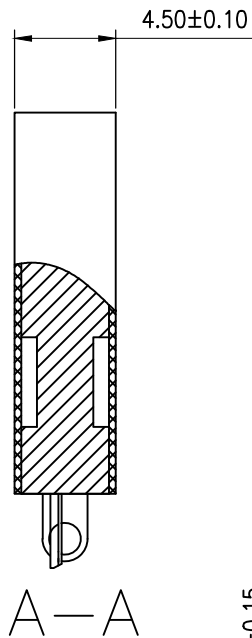
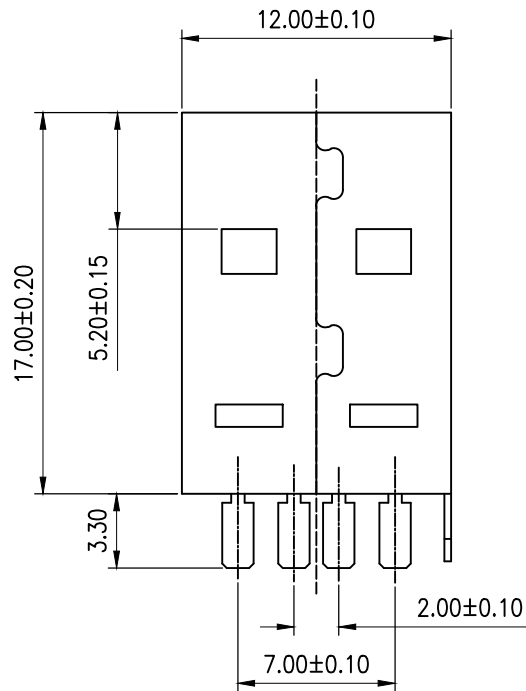
3

2

1

禁止使用一级环境管理物质

REV.	DESCRIPTION	DATE	DWG.	CHKD
0	PROPOSED	14.06.10	B,K	T,H



ELECTRICAL CHARACTERISTICS

Contact Current Rating: 1 Amperes.
 Dielectric Withstanding Voltage: AC 500 V r.m.s.
 Insulation Resistance: 500 Megohms Minimum at DC 500V.
 Contact Resistance: 30 Milliohms Maximum.
 Operating Temperature: -55°C~+85°C

MECHANICAL CHARACTERISTICS

Contact Insertion Force: 3.57kg Maximum
 Contact Separation Force: 1.02kg Minimum

MATERIALS:

Contacts: Brass.
 Insulator: THERMOPLASTIC, UL 94V-0 Rated .
 Shell: SPCC.

MU1-X-A4MX-XXSX-02

5-Unleaded
 Manufacturing Process(ROHS)
 Q-Unleaded Manufacturing Process
 (SONY SS-00259 Standard)
 F-FEPI12001A环保

1-Gold Flash(Au:1u"MIN Over Ni:50u"MIN)
 3-Selective Gold 5u"(Au:5u"MIN Over Ni:50u"MIN)
 5-Selective Gold 15u"(Au:15u"MIN Over Ni:50u"MIN)
 6-Selective Gold 20u"(Au:20u"MIN Over Ni:50u"MIN)
 7-Selective Gold 30u"(Au:30u"MIN Over Ni:50u"MIN)

2-PVC盒
 3-PE袋

1-Front:Nickel 50u"MIN Over Cu 50u"MIN
 And Back:Tin 50u"MIN Over Ni 50u"MIN
 2-Front:Tin 50u"MIN Over Ni 50u"MIN And
 Back:Nickel 50u"MIN Over Cu 50u"MIN
 N-Nickel 50u"MIN Over Cu 50u"MIN
 T-Tin 50u"MIN Over Ni 50u"MIN
 K-Black
 W-White

NOTE	FINISH	PART NO.	NAME	NO.
MATERIAL	NET WEIGHT	COLOR	GENERAL TOLERANCE	UNIT:mm
*****	*****g	*****	±0.2 ±3°	UNIT:mm
F.IN.&TREAT	GROSS WEIGHT	SCALE	SIZE	
*****	*****g	1:1	A4	
CUSTOMER	PART NO.	MUI-X-A4MX-XXSX-02		REV. 0
*****	*****	*****-***-**-**		REV. *
CUSTOMER PART NO.	PROPOSAL NO.	*****-***-**-**		REV. *
*****	*****	*****-***-**-**		REV. *
MSH TECHNOLOGY		NAME (SHEET 1 OF 5)		
APP: '14.06.10 CHKD: '14.06.10 DWG: '14.06.10		USB A TYPE MALE SOLDER TYRE		
T.HASHIMOTO T.HASHIMOTO B.KA				

(CUSTOMER DRAWING)
