

6

5

4

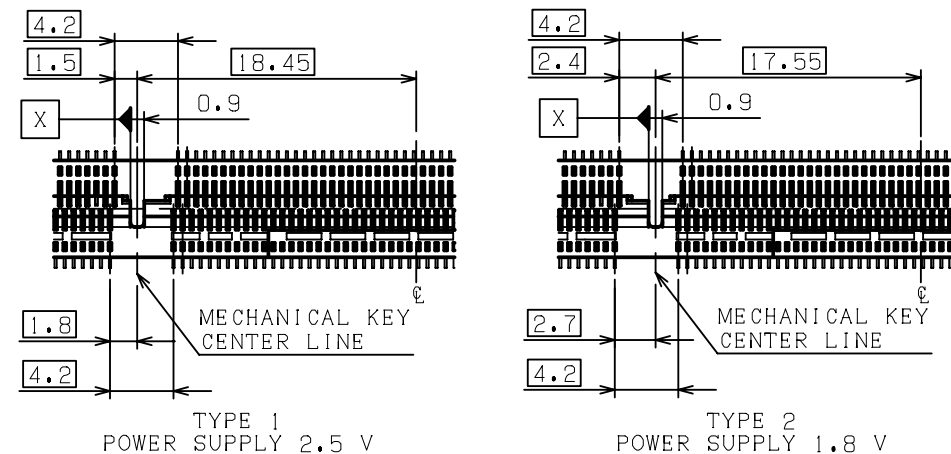
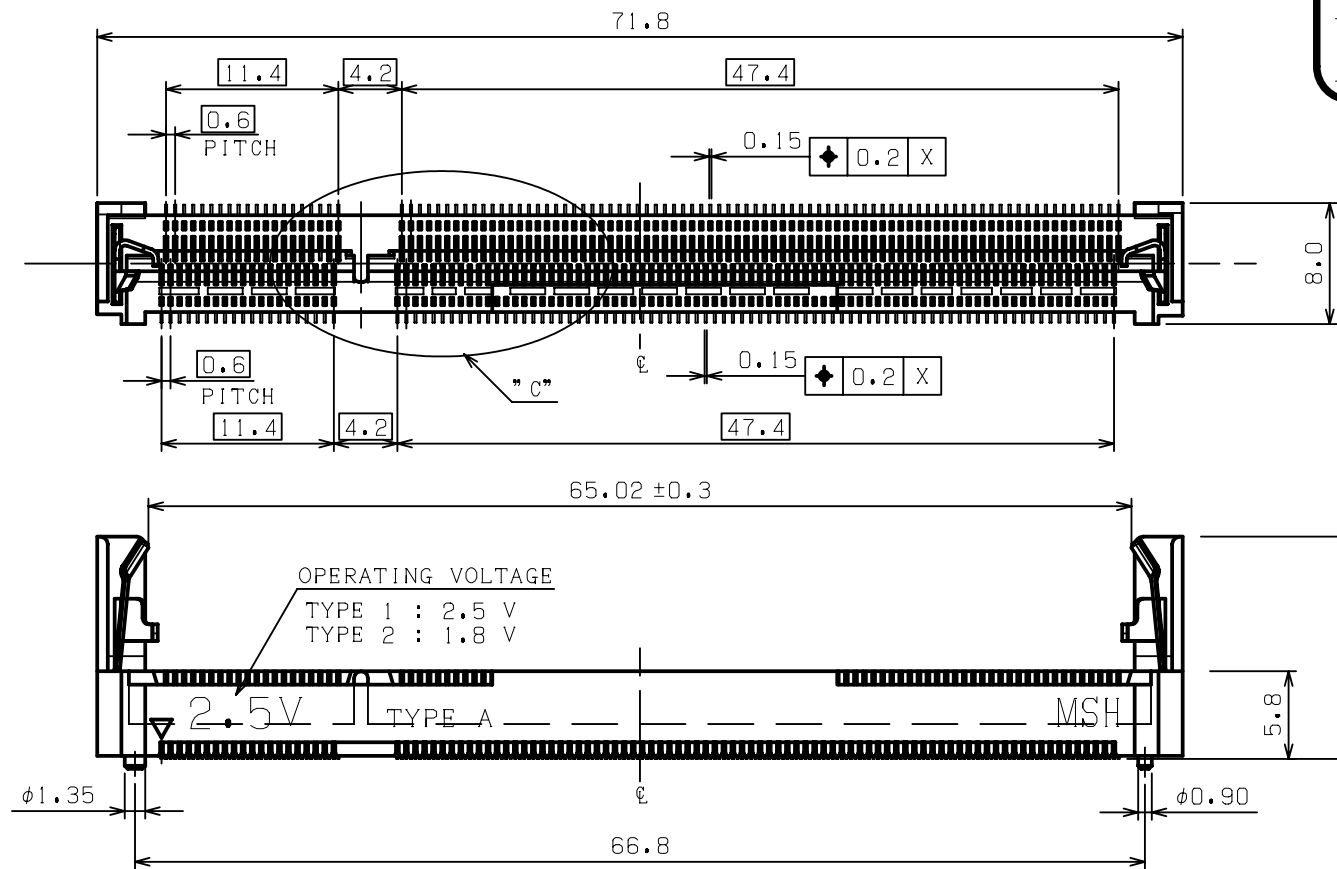
3

2

1

鉛フリー
LEAD FREE

REV.	DESCRIPTION	DATE	DWG.	CHKD
0	PROPOSED	13.09.05	B.K	T.H
A	REVISED	13.09.10	B.K	T.H

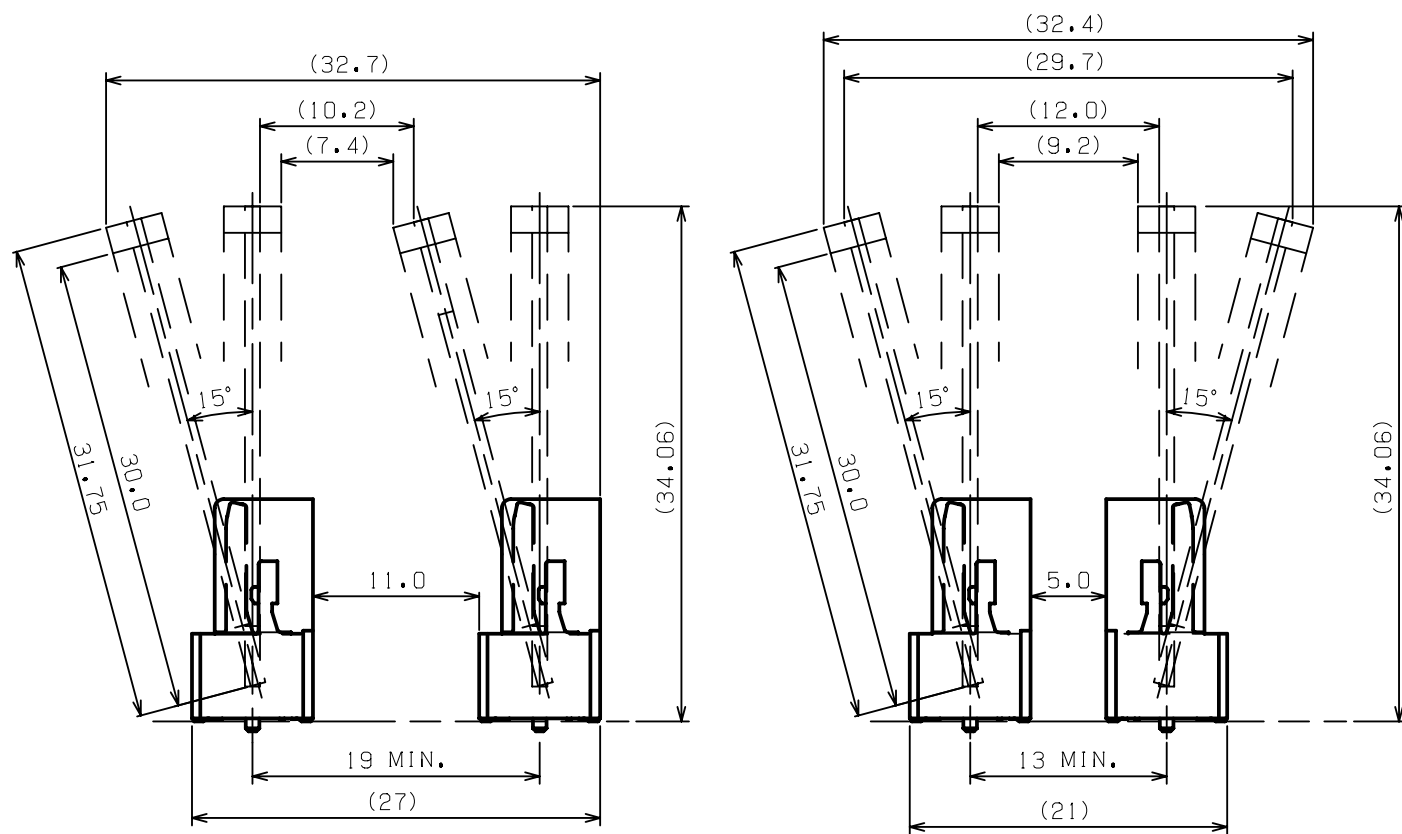
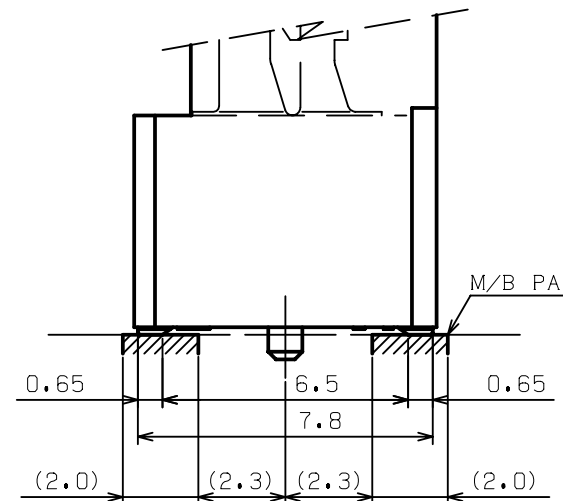


DETAIL C
MECHANICAL KEY TYPE

NOTES.

- MATERIAL: HOUSING: LCP, UL94V-0, COLOR: NATURAL
CONTACT: PHOS-BRO
METAL LATCH: SUS
 - PLATING: CONTACT (CONTACT POINT & SOLDER AREA):
Au FLASH (0.3μm)
Ni UNDER PLATE (50μm MIN)
- △ MUST BE MEASURED FLOATING AMOUNT OF CONTACT TAILS FROM DATUM SURFACE IS 0.1mm MAX.

△ TOLERANCES NON-CUMULATIVE



(CA1030+CA1030)

(CA1030+CA1031)

RECOMMENDED SOCKET LAYOUT

1.8V	TYPE 2	CA1030-200N02	CA1030-200N32
2.5V	TYPE 1	CA1030-200N01	CA1030-200N31
POWER SUPPLY	KEY TYPE	PART NO. OF CONNECTOR	PART NO. OF PACKAGED PRODUCT (WITH SOFT TARY)

MATERIAL	SEE NOTE	NET WEIGHT	4.6g	COLOR	SEE NOTE	GENERAL TOLERANCE	±0.2 ±3°	UNIT:mm
FIN.&TREAT	SEE NOTE	GROSS WEIGHT	***g	SCALE	2:1	SIZE	A3	
CUSTOMER	*****	PART NO.	CA1030-200N**			REV.	A	
CUSTOMER PART NO.	*****	PROPOSAL NO.	****-**-**-**			REV.	*	
美星鴻科技股份有限公司 MSH TECHNOLOGY INC.		NAME		DDR_S.O_DIMM_SOCKET_VERTICAL_SHORT_TYPE_A				
APP.	13.09.05	CHKD.	13.09.05	DWG.	13.09.05	(SHEET 1 OF 3)		
T.HASHIMOTO	T.HASHIMOTO	B.KA		FOR 200PIN DDR S.O DIMM				

6

5

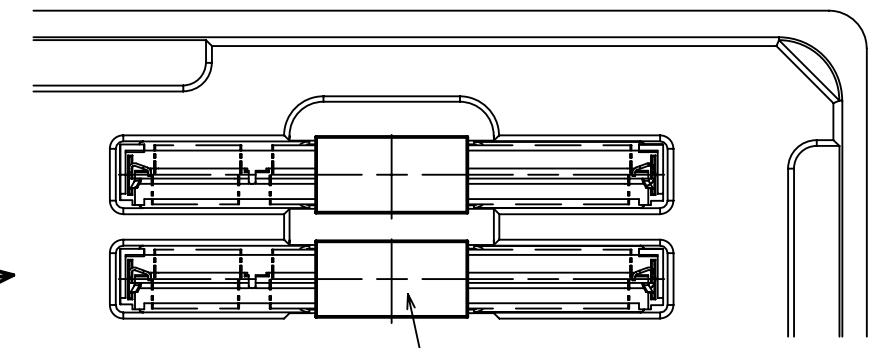
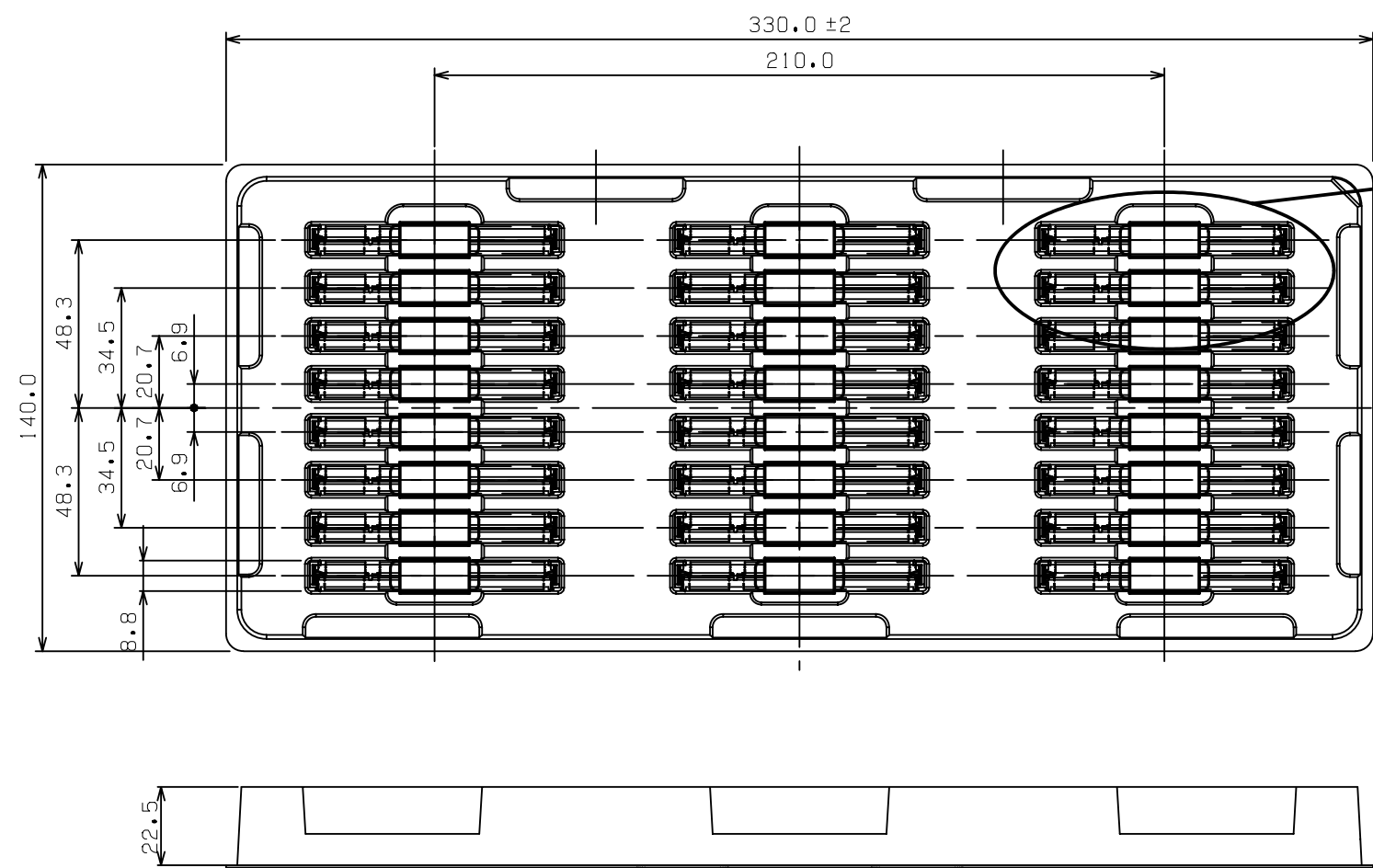
4

3

2

1

REV.	DESCRIPTION	DATE	DWG.	CHKD
	SEE SHEET 1 OF 3			



吸着実装用テープ、サイズ：10×20mm
TAPE, SIZE: 10X20mm

24	TYPE 2	CA1030-200N02	CA1030-200N32
24	TYPE 1	CA1030-200N01	CA1030-200N31
QTY.	KEY TYPE	PART NO. OF CONNECTOR	PART NO. OF PACKAGED PRODUCT (WITH SOFT TARY)

MATERIAL	*****	NET WEIGHT	***g	COLOR	*****	GENERAL TOLERANCE	±0.2 ±3°	UNIT:mm
FIN.&TREAT	*****	GROSS WEIGHT	***g	SCALE	*/*	SIZE	A3	
CUSTOMER	*****	PART NO.		CA1030-200N**		REV.	A	
CUSTOMER PART NO.	*****	PROPOSAL NO.		****-**-**-**		REV.	*	
APP. 13.09.05 T.HASHIMOTO				CHKD 13.09.05 T.HASHIMOTO		DWG. 13.09.05 B.KA		
美星鴻科技股份有限公司 MSH TECHNOLOGY INC.				NAME		(SHEET 3 OF 3)		
				DDR_S.O_DIMM_SOCKET_VERTICAL_SHORT_TYPE_A				
				FOR 200PIN DDR S.O DIMM				

(CUSTOMER DRAWING)